

Community Inclusion Guiding Principles



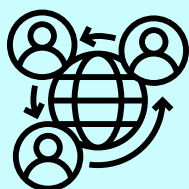
Shelmut **Wholeness**

We strive to be places where our whole selves are celebrated.



B'Tselem Elohim **Inherent Worth**

We strive to be places where each individual is valued.



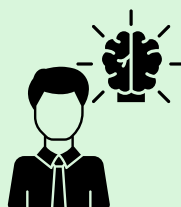
Arevut
Interdependence
We strive to be a community that acknowledges and celebrates our interdependence.



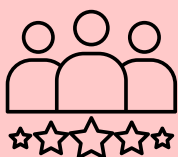
Negeshut
Accessibility
Our family of agencies actively seek to identify, remove, and prevent barriers to full participation and to become more accessible by learning and practicing inclusive design.



Al Pi Darko
Inclusive Education
We strive to support and collaborate with program professionals, educators, and families to ensure educational programs are inclusive.



Kavanah
Act with Intention
We strive to be proactive and anticipate access needs.



Svivat Avodah Tovah
Positive Work Environment
We strive to be accessible and supportive workplaces in which staff can learn, grow, and achieve.



Tzedek
Justice
Our family of agencies strive to be communities engaged in the work of justice for and with people with disabilities.